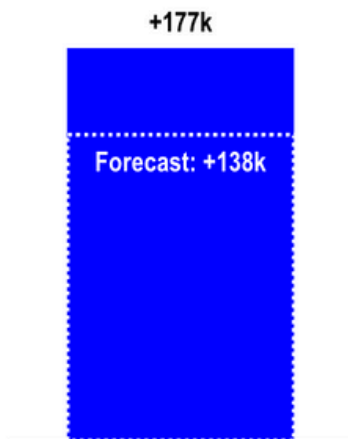


# April Employment Report

## KEY TAKE AWAYS

- **Job creation:** 177K new payrolls vs. forecasts for 138k
- **Unemployment Rate** stayed at 4.2%
- **Average Hourly Earnings** rose 0.2% from March to slightly lower than forecasted

### APRIL NEW PAYROLLS

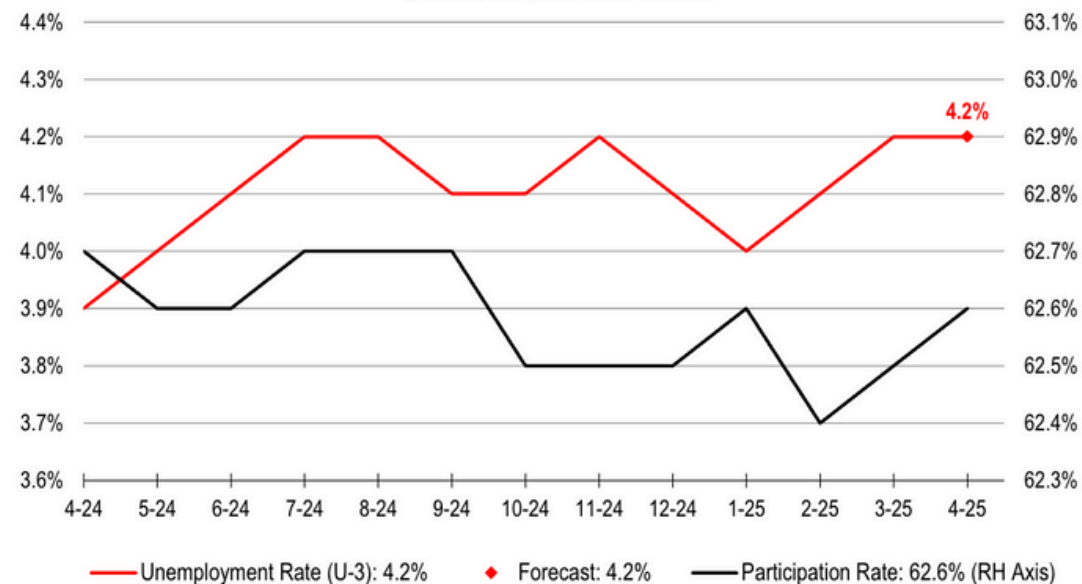


### UNEMPLOYMENT RATE

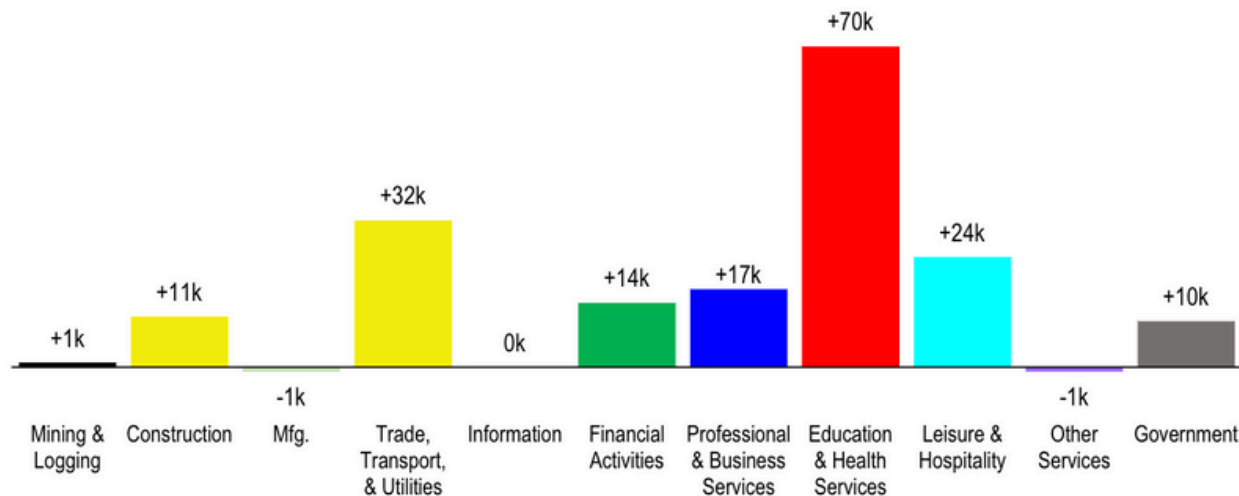
4.2% - No Change

Forecast: 4.2%, No Change

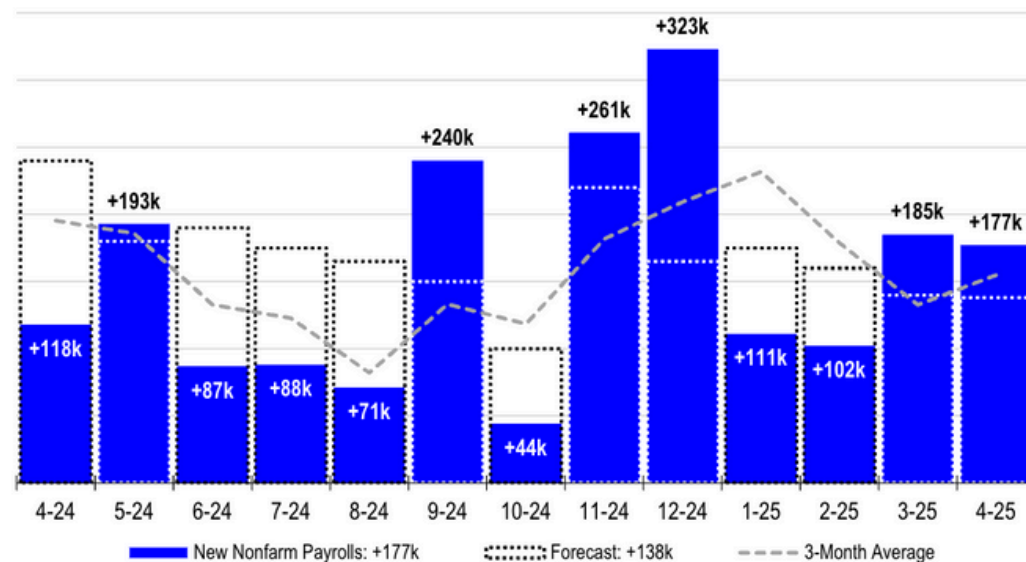
### UNEMPLOYMENT RATE

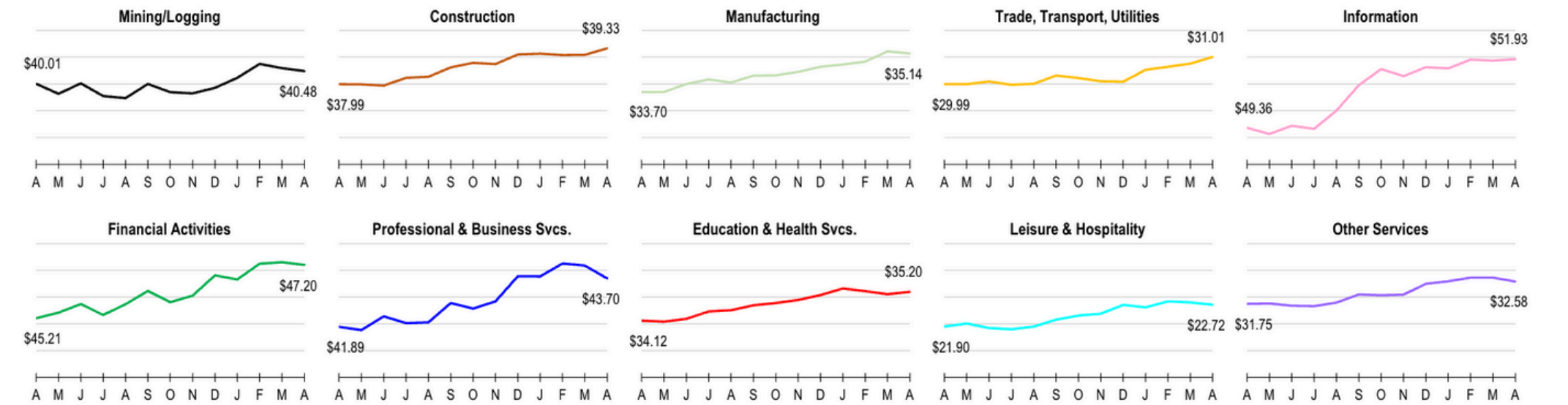
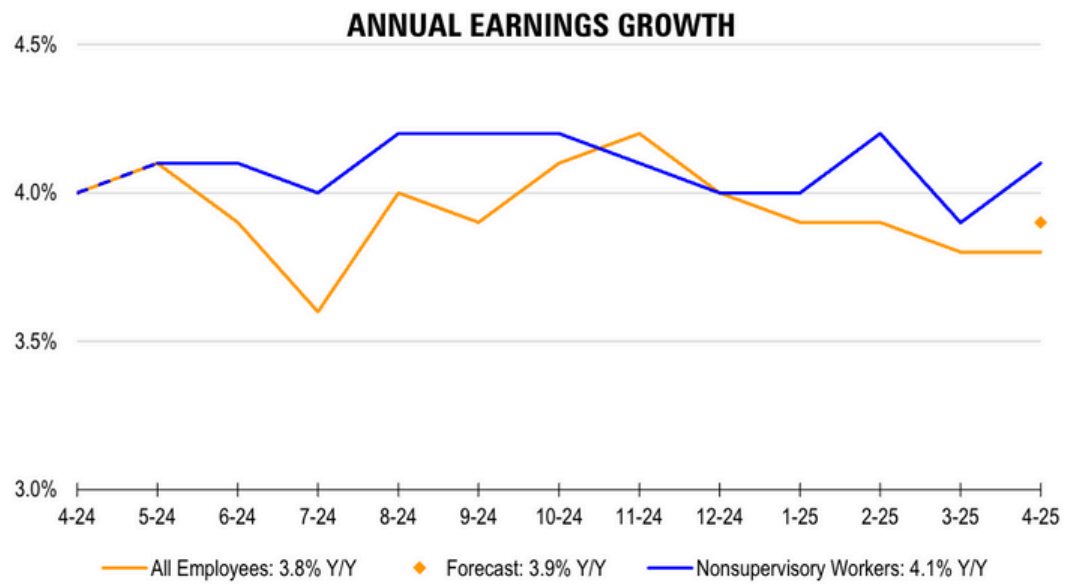
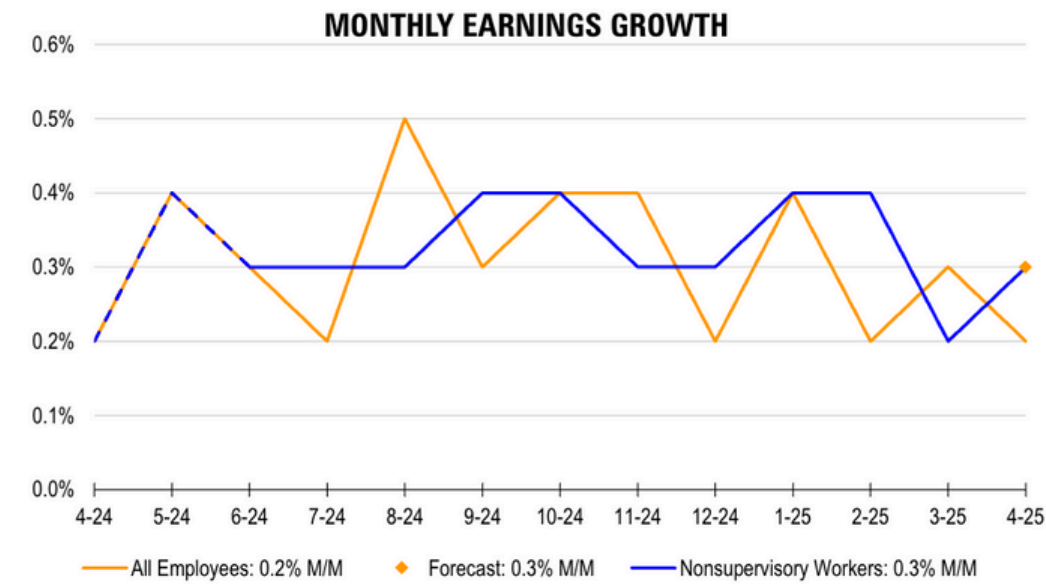


### NEW PAYROLLS BY INDUSTRY

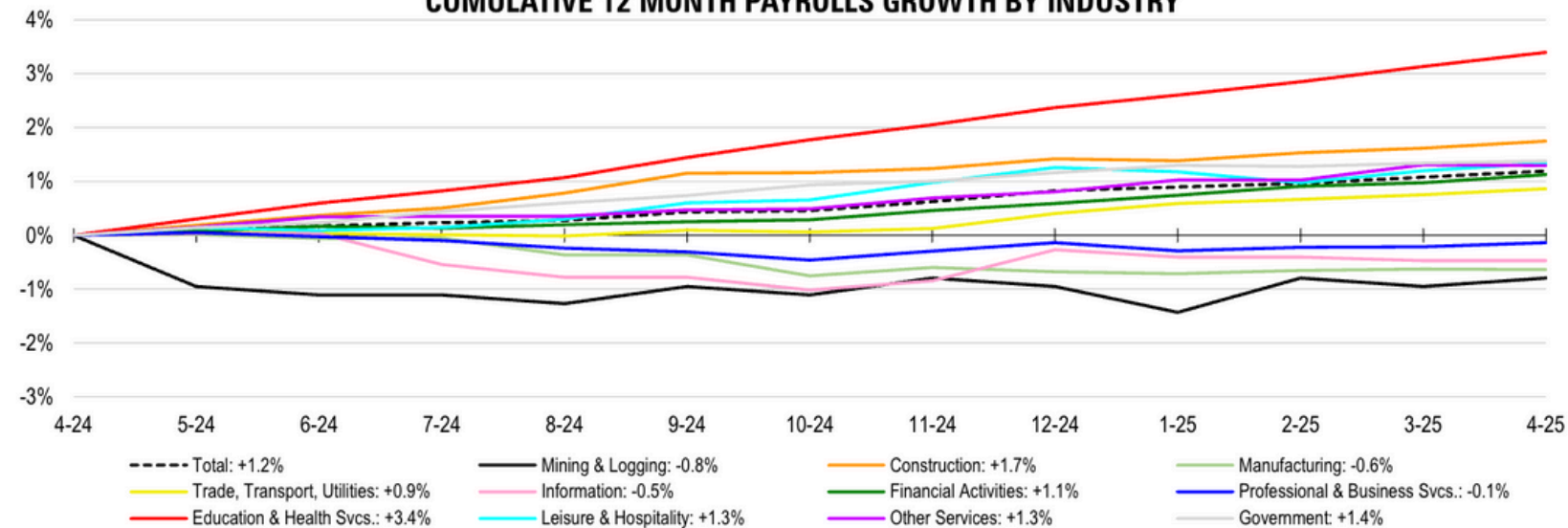


### MONTHLY JOB CREATION



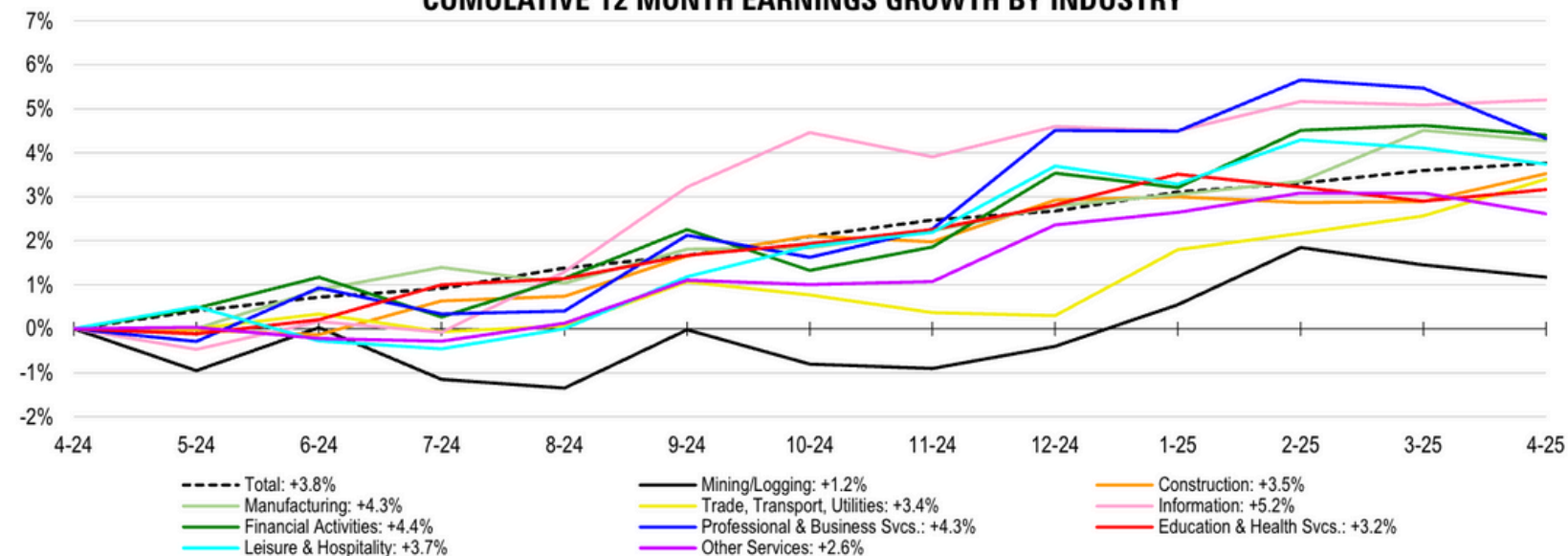


### CUMULATIVE 12 MONTH PAYROLLS GROWTH BY INDUSTRY

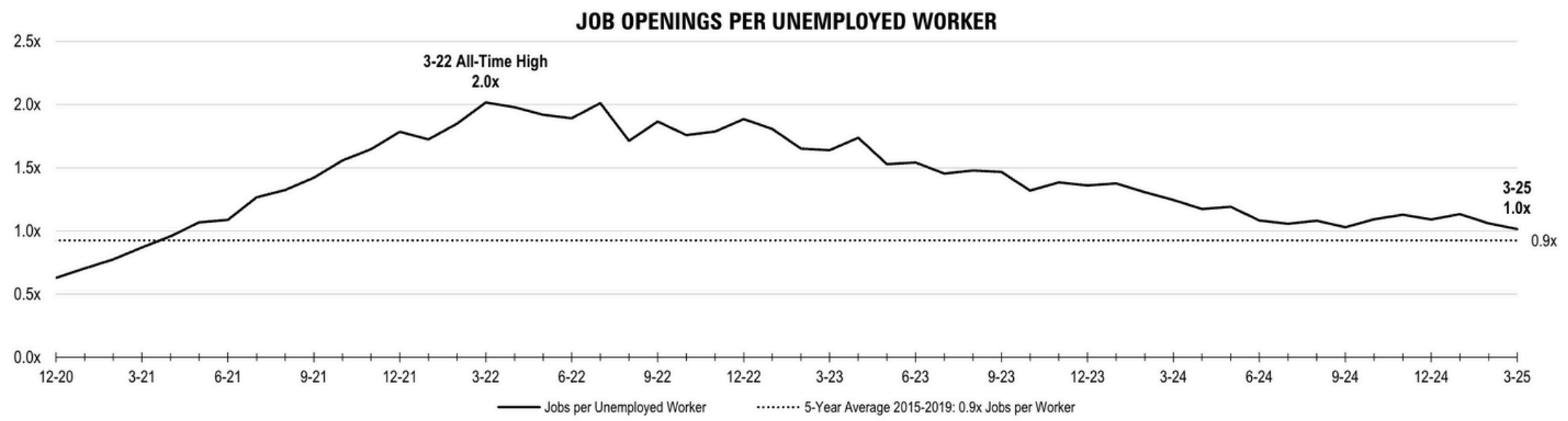
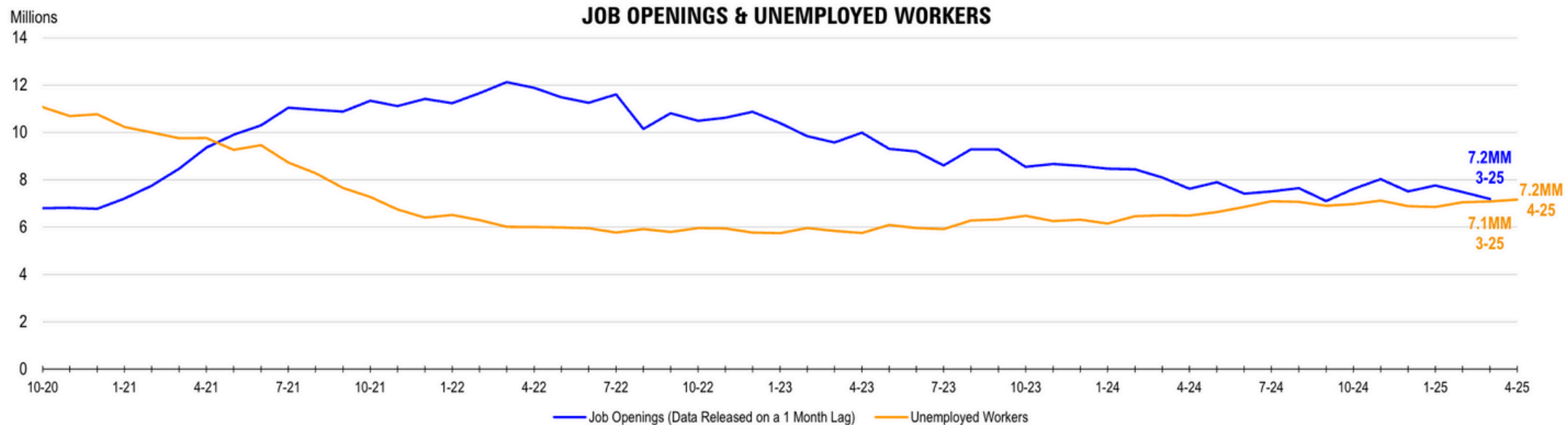


Monthly Payrolls Growth	April
Mining/Logging	+0.2%
Construction	+0.1%
Manufacturing	-0.0%
Trade, Transport, Utilities	+0.1%
Information	0.0%
Financial Activities	+0.2%
Professional & Business Svcs.	+0.1%
Education & Health Svcs.	+0.3%
Leisure & Hospitality	+0.1%
Other Services	-0.0%
Government	+0.0%
<b>Total</b>	<b>+0.1%</b>

### CUMULATIVE 12 MONTH EARNINGS GROWTH BY INDUSTRY



Monthly Earnings Growth	April
Mining/Logging	-0.3%
Construction	+0.6%
Manufacturing	-0.2%
Trade, Transport, Utilities	+0.8%
Information	+0.1%
Financial Activities	-0.2%
Professional & Business Svcs.	-1.1%
Education & Health Svcs.	+0.3%
Leisure & Hospitality	-0.4%
Other Services	-0.5%
<b>Total</b>	<b>+0.2%</b>





**Contact TalenTrust**  
for your **retention** and **recruitment** needs:

 303.838.3334

 [connections@talentrust.com](mailto:connections@talentrust.com)