

# April Job's Report

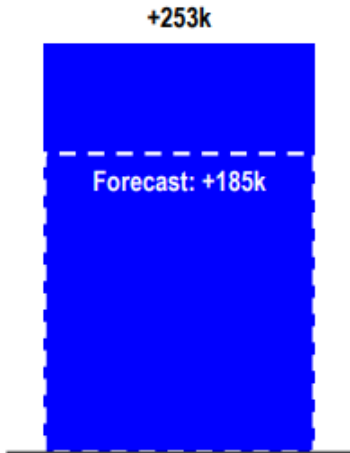
## SUMMARY

The April Employment Report shows the economy is still chugging along despite widespread expectations for a recession and shows the tight labor market continues. Payrolls increased for all eleven industry groups, led by Education & Health Services, which added 65k jobs. Information, which includes publishing, broadcasting, and software, added the fewest, 1k.

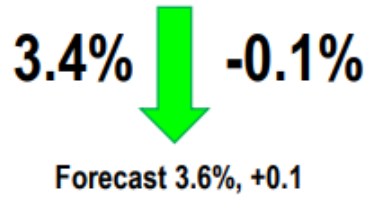
## KEY TAKE AWAYS

- **Job creation increases:** 253k new payrolls vs. 185k new jobs expected
- **Unemployment falls yet again:** 0.1% to 3.4%, vs. forecast 0.1% increase
- **Average Hourly Earnings rise more than expected:** 0.5% M/M and 4.4% Y/Y vs. estimates for 0.3% and 4.2%, respectively

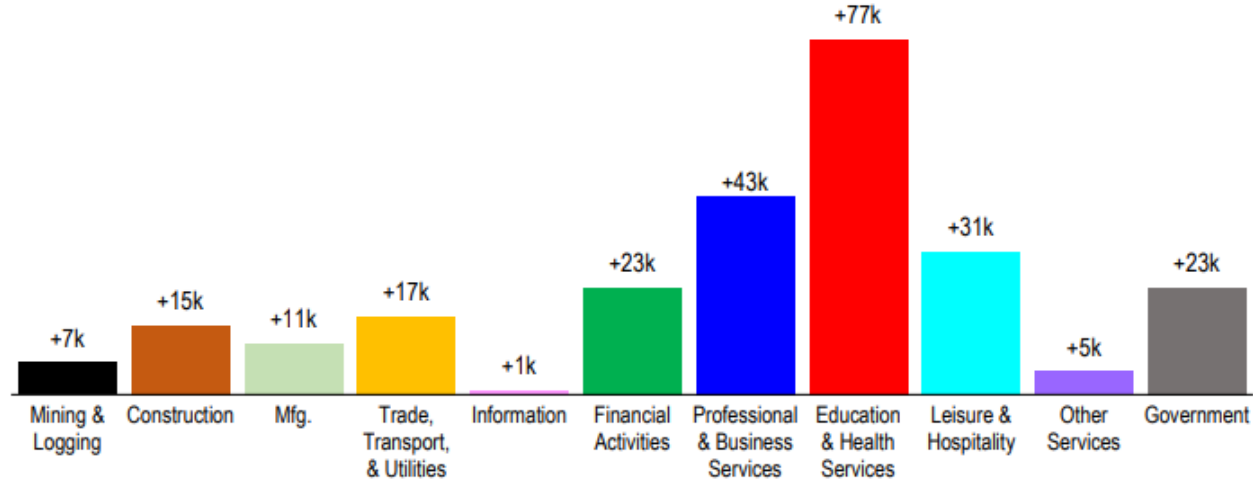
**APRIL NEW PAYROLLS**



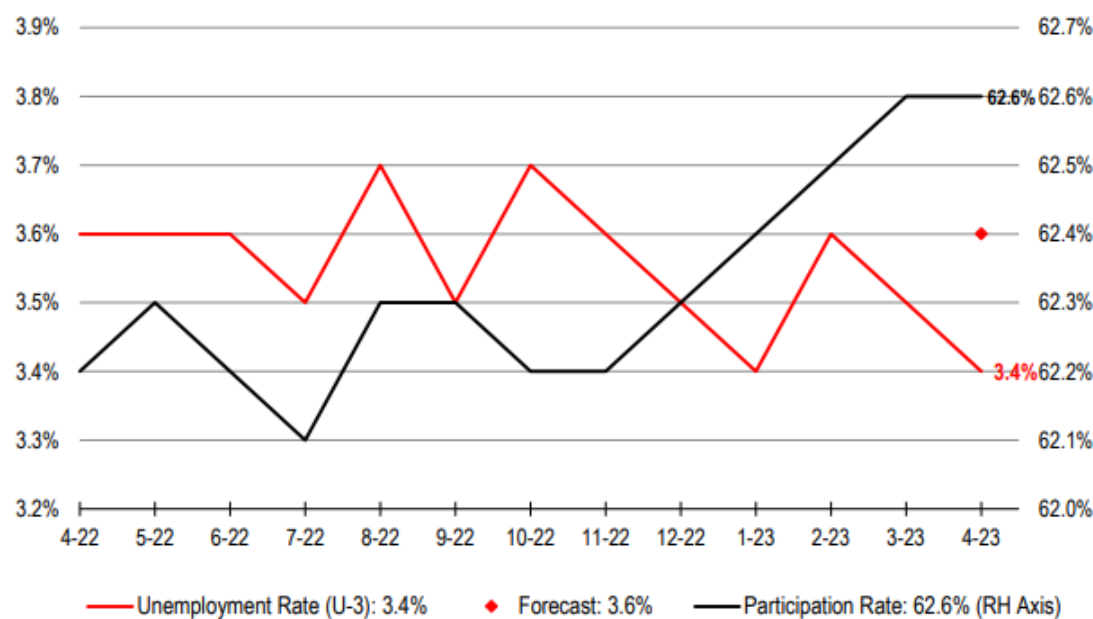
**UNEMPLOYMENT RATE**



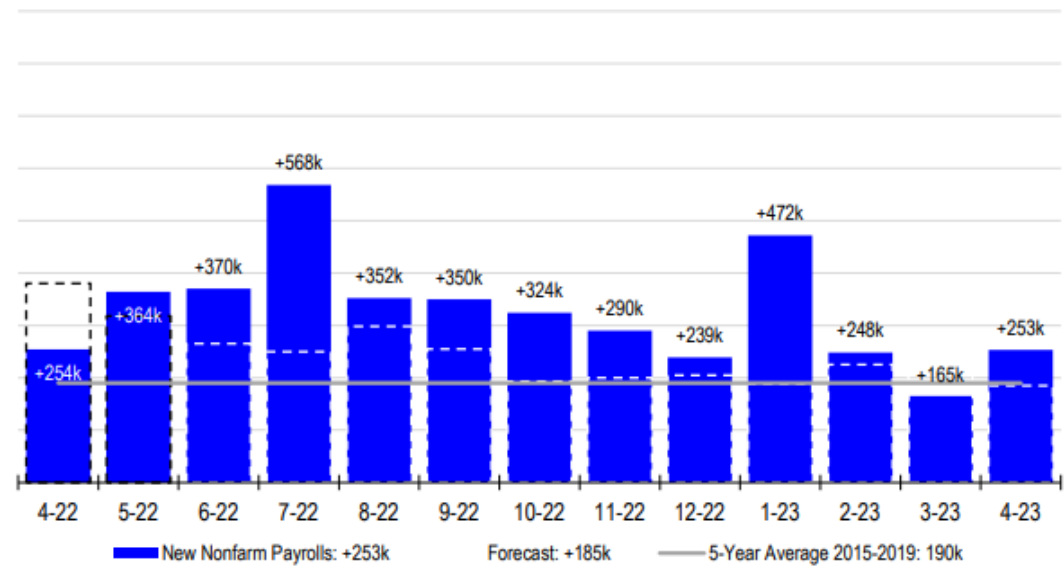
**NEW PAYROLLS BY INDUSTRY**



**UNEMPLOYMENT RATE**

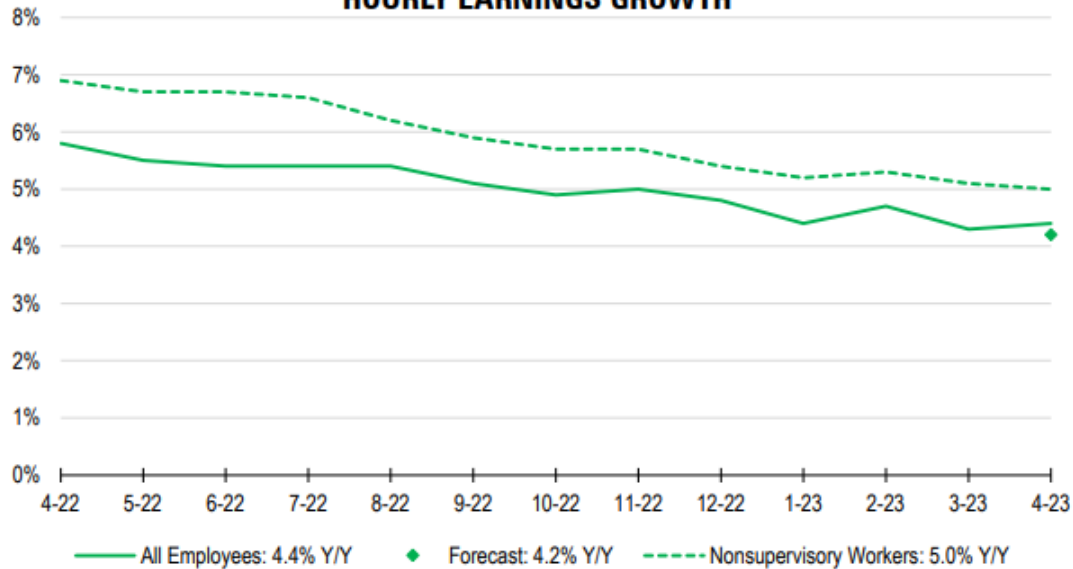


**MONTHLY JOB CREATION**

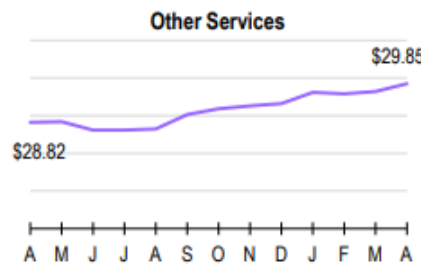
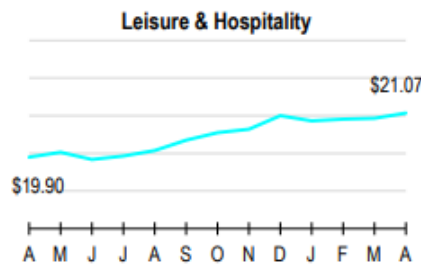
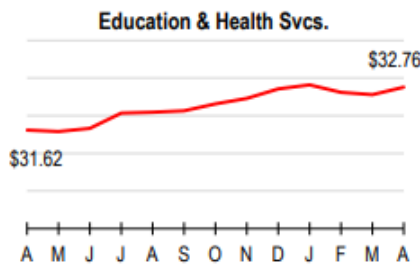
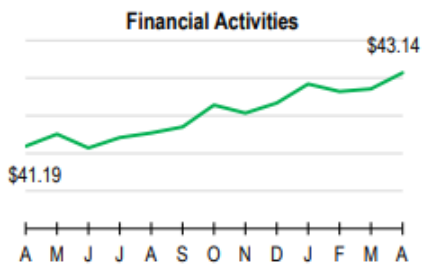
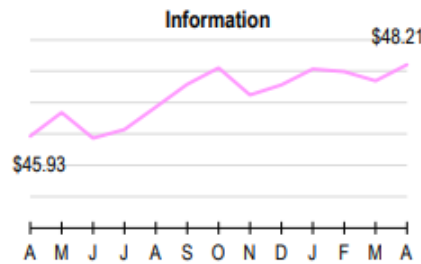
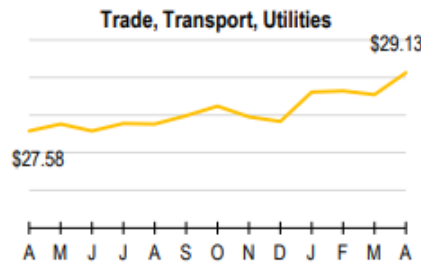
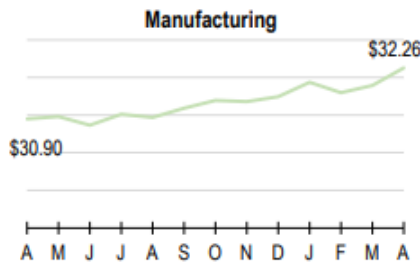
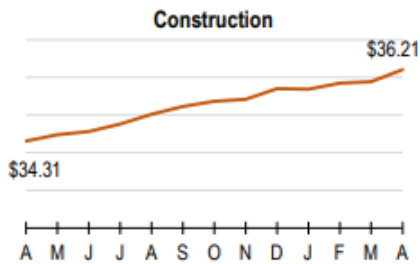
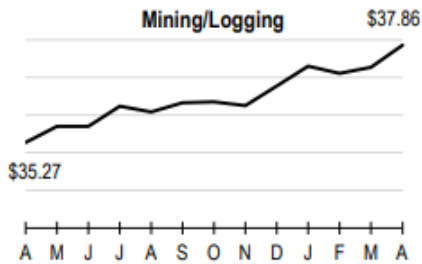
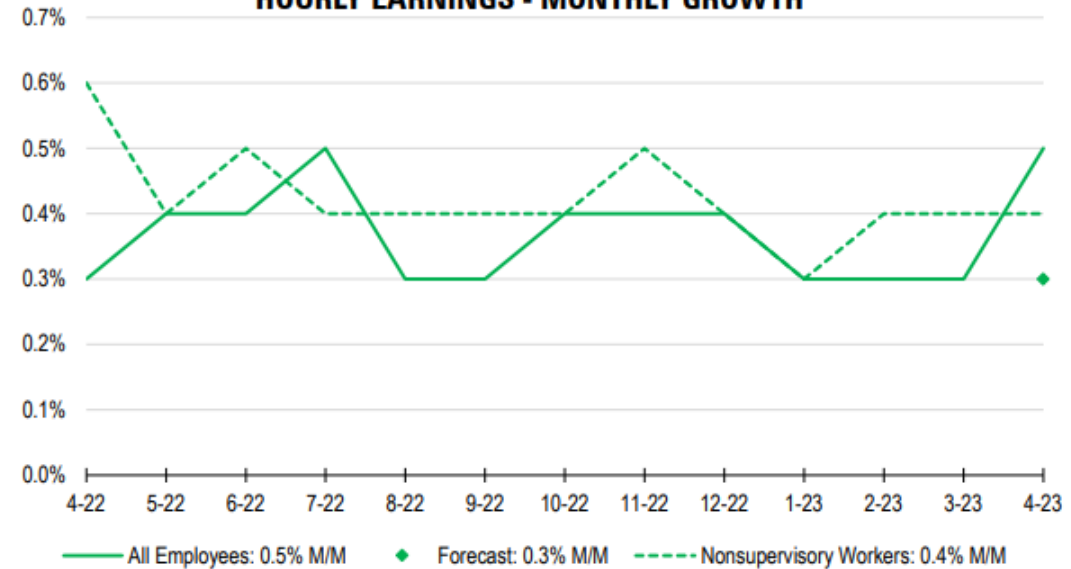


Source: Bureau of Labor Statistics

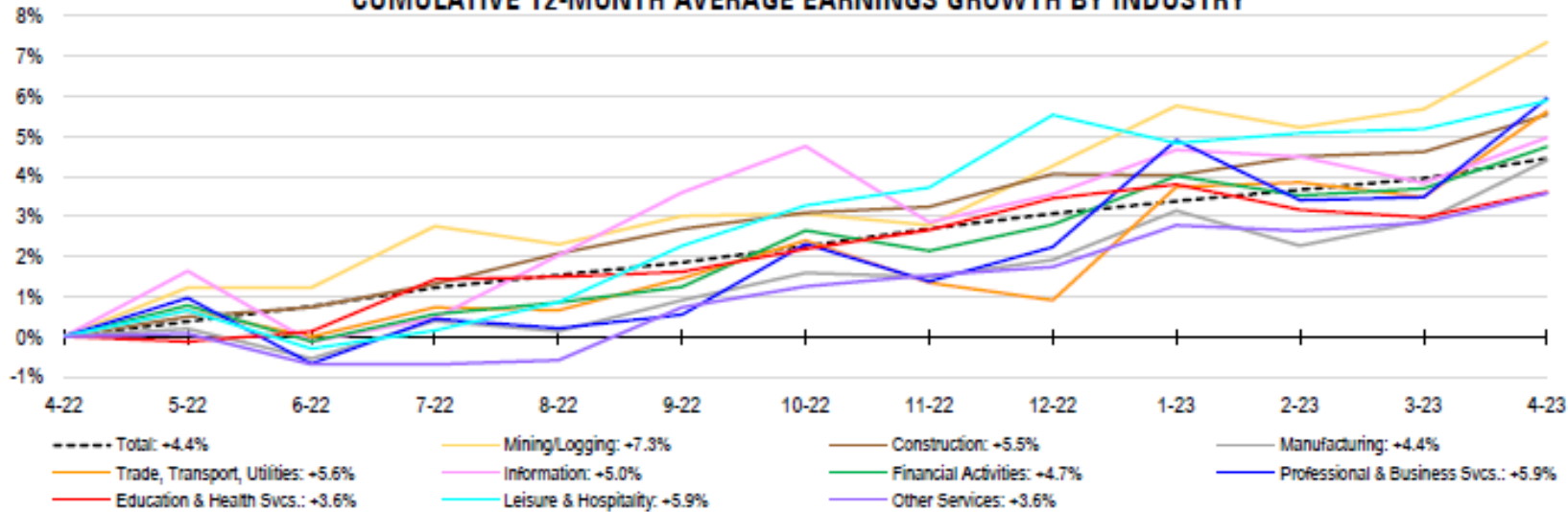
### HOURLY EARNINGS GROWTH



### HOURLY EARNINGS - MONTHLY GROWTH

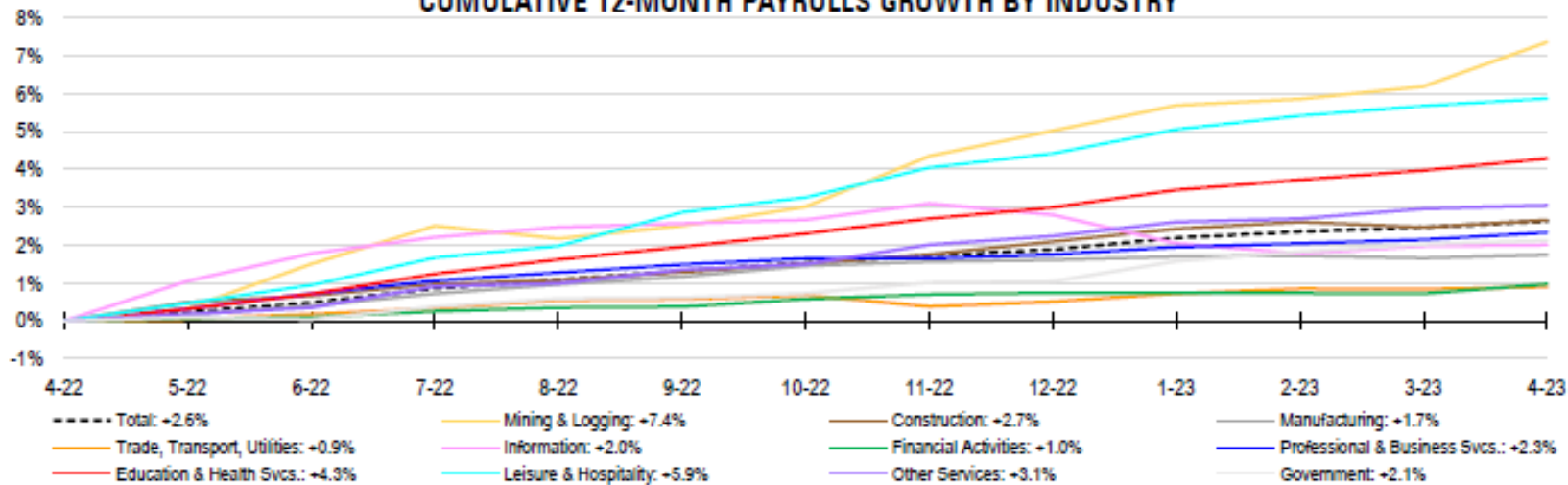


**CUMULATIVE 12-MONTH AVERAGE EARNINGS GROWTH BY INDUSTRY**



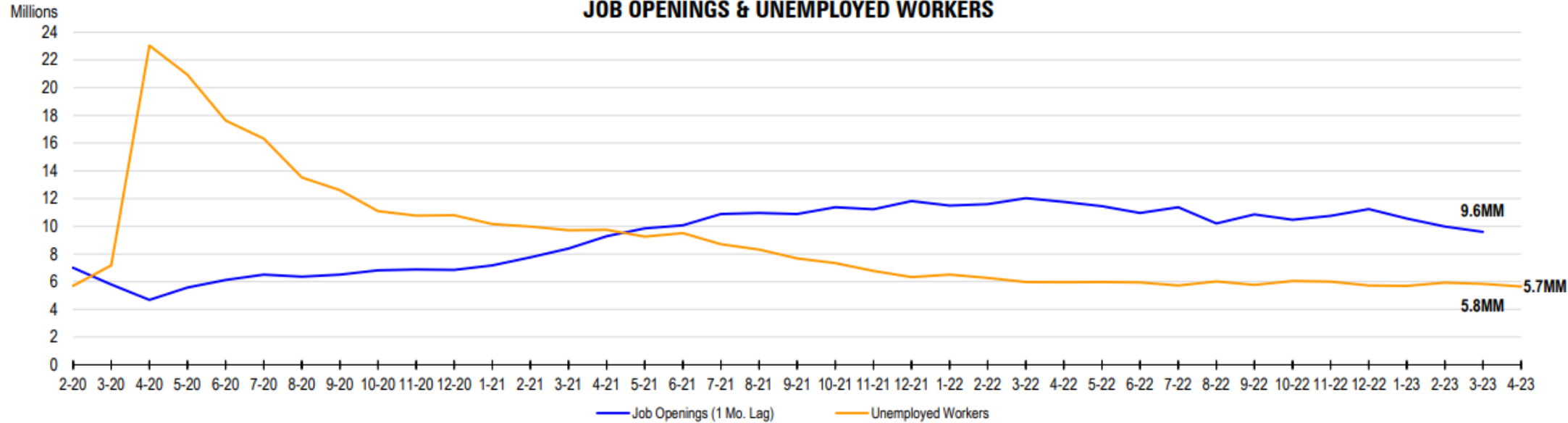
Monthly Earnings Growth	April
Mining/Logging	+1.6%
Construction	+0.9%
Manufacturing	+1.5%
Trade, Transport, Utilities	+2.1%
Information	+1.1%
Financial Activities	+1.0%
Professional & Business Svcs.	+2.4%
Education & Health Svcs.	+0.6%
Leisure & Hospitality	+0.7%
Other Services	+0.7%
<b>Total</b>	<b>+0.5%</b>

**CUMULATIVE 12-MONTH PAYROLLS GROWTH BY INDUSTRY**

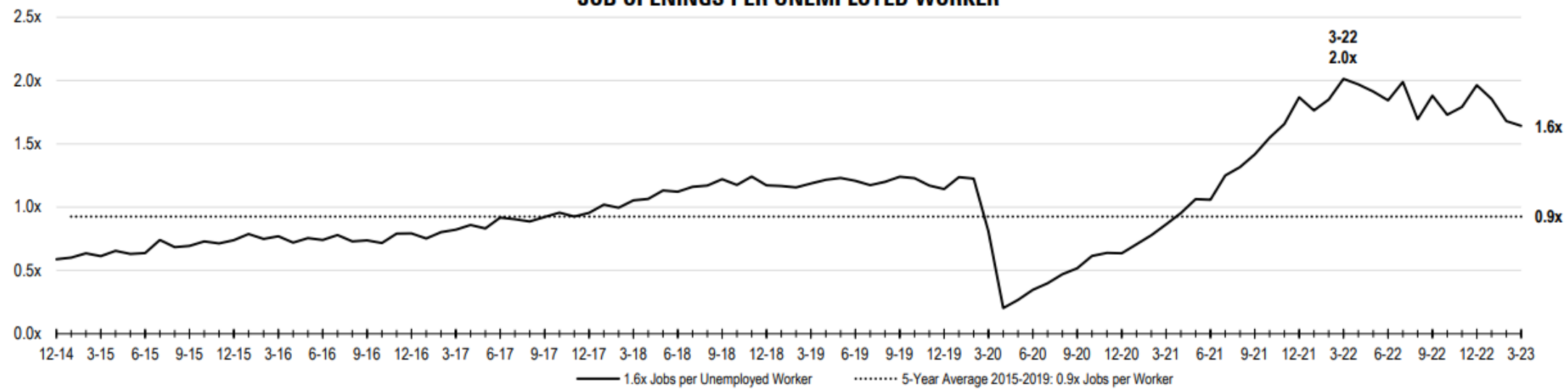


Monthly Payrolls Growth	April
Mining/Logging	+1.1%
Construction	+0.2%
Manufacturing	+0.1%
Trade, Transport, Utilities	+0.1%
Information	+0.0%
Financial Activities	+0.3%
Professional & Business Svcs.	+0.2%
Education & Health Svcs.	+0.3%
Leisure & Hospitality	+0.2%
Other Services	+0.1%
Government	+0.1%
<b>Total</b>	<b>+0.2%</b>

### JOB OPENINGS & UNEMPLOYED WORKERS



### JOB OPENINGS PER UNEMPLOYED WORKER



**Contact TalenTrust**  
for your **retention** and **recruitment** needs:

 303.838.3334

 [connections@talentrust.com](mailto:connections@talentrust.com)